

**BAXI**  
Make it easy



ErP Compliant 

**Baxi 600  
System**

# Introduction

**BAXI**  
Make it easy

## Reliability

Every Baxi boiler has to achieve 100% to pass a full function test using gas, water and electricity, before it leaves the production line.

## Efficiency

Baxi boilers now come with energy labels showing the efficiency rating of the boiler. All boilers are A rated to help you save money on your fuel bill.

## Warranty

Every Baxi boiler comes with a parts and labour warranty for your peace of mind.\*

## Baxi make it easy

Baxi is easy to deal with, because the whole Baxi family, including Customer Support and Genuine Parts, is all under one roof.

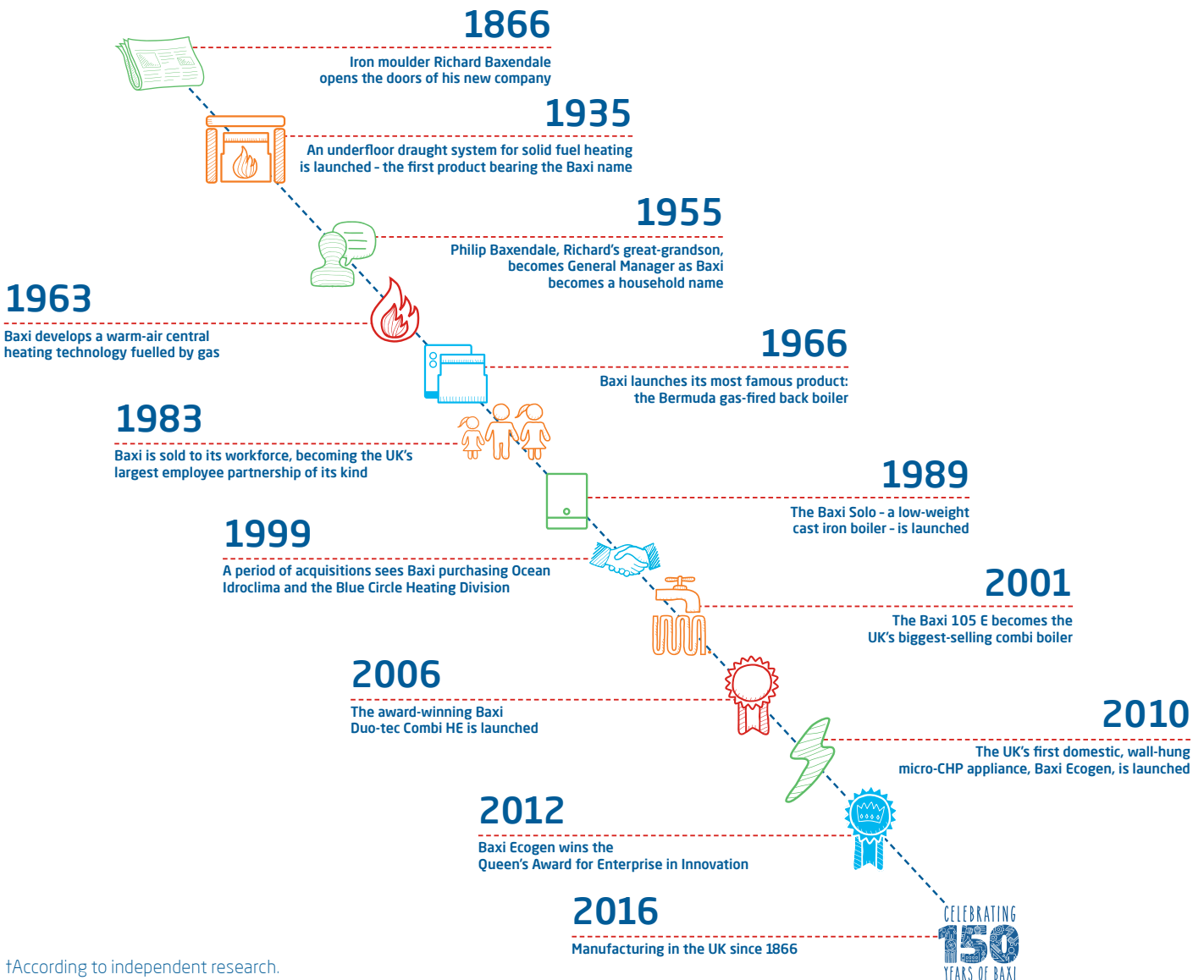
## No jargon - plain and simple

Baxi warranty terms and conditions have been approved by the Plain English Campaign, so they are easy to understand.

\*Subject to completion of the Benchmark Commissioning checklist, registration of the boiler warranty and an annual service.

## A BRIEF HISTORY OF BAXI

Baxi has been manufacturing in the UK for over 150 years. It has a heritage of providing cutting edge heating products for homes and is the best known boiler manufacturer amongst homeowners.†



†According to independent research.



**How we  
make it easy**

Easy to use controls

# Baxi 600 System

The compact dimensions of the Baxi 600 System boiler make it perfect for discreet siting, especially when space is at a premium. It is designed for fully pumped sealed systems and can be installed with an unvented cylinder, such as the Megaflo Eco. If you need lots of hot water, or have more than one bathroom, it will satisfy all your hot water and heating requirements.



## Key features

Outputs 15kW, 18kW, 24kW

Compact cupboard size

Easy to use controls

High efficiency

Dedicated 24kW LPG model

Very quiet in operation

Pipes behind facility within boiler casing

## Benefits

To suit most property sizes

Fits neatly in a 290mm deep cupboard

For extra comfort

Can save money on your heating and hot water bills

Suitable for homes without mains gas

Can be installed in your home without disturbing you

Facilitates hidden pipework behind for a neater finish

# Use and performance



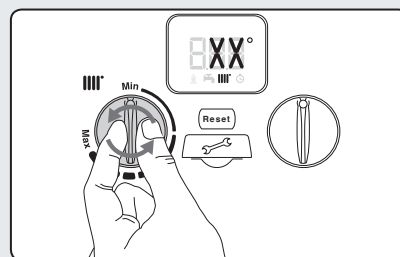
A Boiler width = 390mm  
 B Boiler height = 700mm  
 C Boiler depth = 285mm  
 D Side clearance = 5mm\*

E Upper clearance = 178mm\*  
 F Lower clearance = 200mm\*  
 G Front clearance = 5mm\* in operation,  
 450mm\* for servicing purposes


\*These are the minimum recommended clearance dimensions.  
 Greater clearance will aid installation and maintenance.

## Controls

Setting your boiler couldn't be simpler.



### To increase or decrease the boiler temperature

Turn the control knob with the symbol  over it, clockwise to increase and anticlockwise to decrease. The set temperature will be shown on the display screen.

## Performance

|                             | 615 | 618 | 624 | 624 LPG |
|-----------------------------|-----|-----|-----|---------|
| Central heating output (kW) | 15  | 18  | 24  | 24      |
| Efficiency rating           | A   | A   | A   | A       |

# Added value services

## Find a Baxi approved installer

Looking for your local Baxi installer? Just enter your postcode on our website and we will provide a list of Gas Safe registered installers near you, who are all fully trained to work on Baxi boilers.

[www.baxi.co.uk/findaninstaller](http://www.baxi.co.uk/findaninstaller)

## Lifetime support for your boiler

We keep parts available for up to 10 years after we stop making a boiler, so your installer can continue to maintain your boiler for the whole of its life.

## Expert support, whenever you need it

Baxi's award-winning UK-based customer support team is only a phone call away. And we have a nationwide network of our own Gas Safe registered engineers that can help you wherever you are.

**Call Baxi Customer Support on 0344 871 1525**

If you have mislaid your boiler's instructions, you can download them from the Baxi website on your computer, tablet or smartphone, 24/7. You'll also find lots of other useful information, including helpful 'How to' video guides.

[www.baxi.co.uk](http://www.baxi.co.uk)

## Jargon buster

If 'unvented', 'sealed system' or 'heat only' sound gobbledegook to you, look them up in our jargon buster – written to help you easily understand your heating system.

[www.baxi.co.uk/jargonbuster](http://www.baxi.co.uk/jargonbuster)



0344 871 1525

#### Opening hours

Monday - Friday, 8.00am - 6.00pm

Weekends and bank holidays, 8.30am - 2.00pm

We are open 365 days a year.

Please note calls may be monitored or recorded.



[baxi.co.uk](http://baxi.co.uk)



[info@baxi.co.uk](mailto:info@baxi.co.uk)



Baxi

Brooks House

Coventry Road

Warwick CV34 4LL

Follow us



This brochure is printed on paper sourced from well managed forests and other controlled sources, using vegetable based inks. Please recycle this brochure when you have finished with it.

Baxi policy is one of continual improvement and development. The right to change specification and appearance without prior notice is reserved. The reproduction of colours is as accurate as photographic and printing processes allow. The consumer's statutory rights are not affected. e&oe

Baxi 600 System consumer guide/Feb 19